

Lowest Low Fertility in Russia: Reality or problems of measurement?



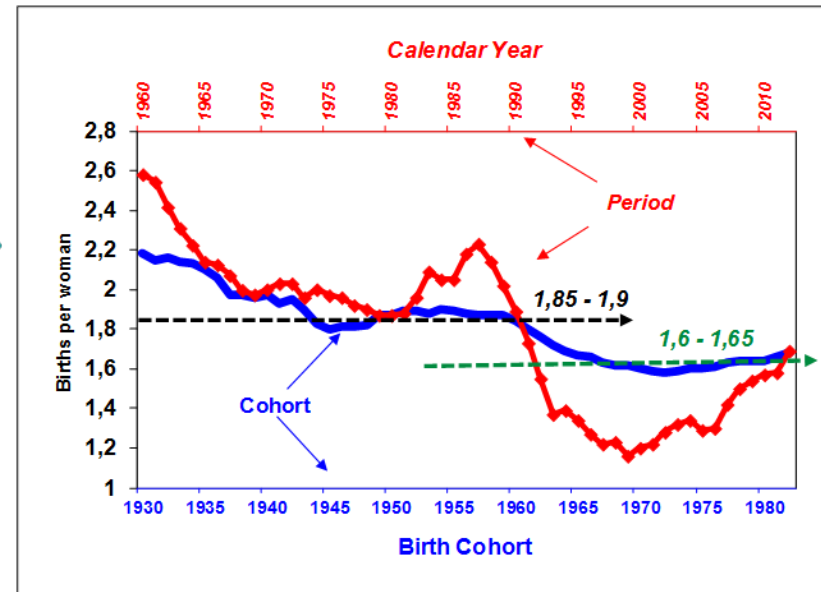
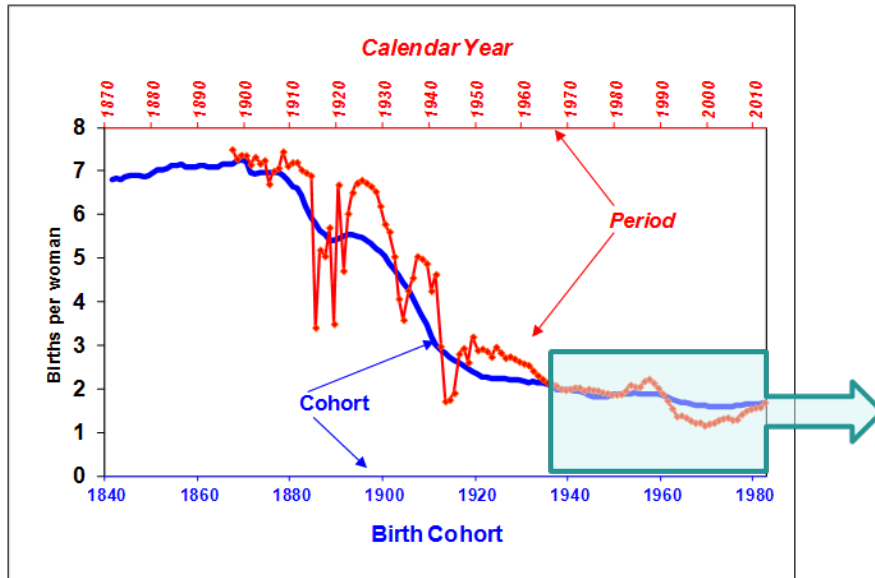
Sergei V. Zakharov
Institute of Demography (IDEM)
Higher School of Economics (HSE)
Moscow, Russia

szakharov@hse.ru

LOW FERTILITY AND LOW MORTALITY:
OBSERVABLE REALITY AND VISIONS OF
THE FUTURE

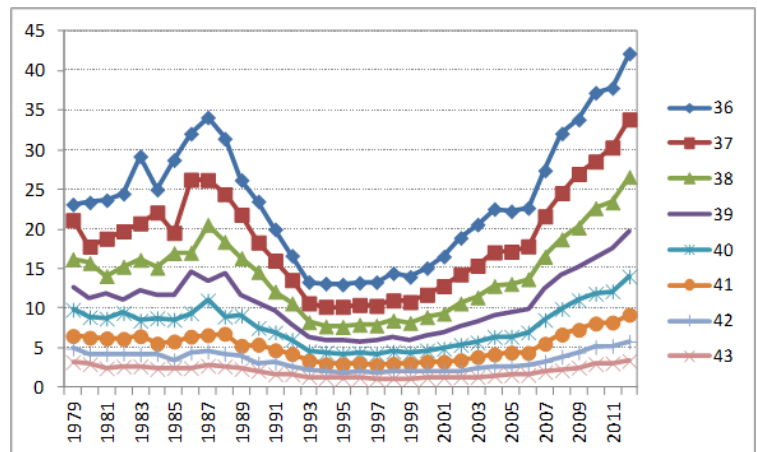
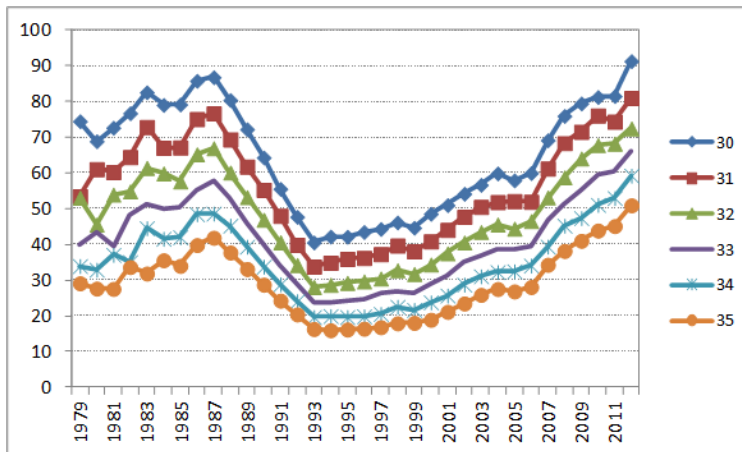
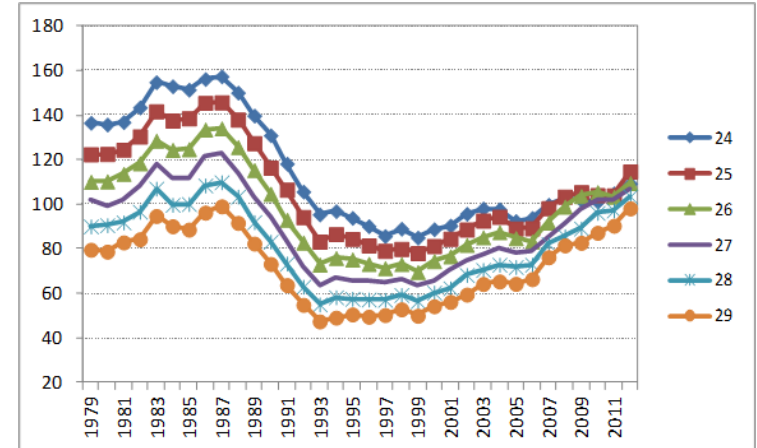
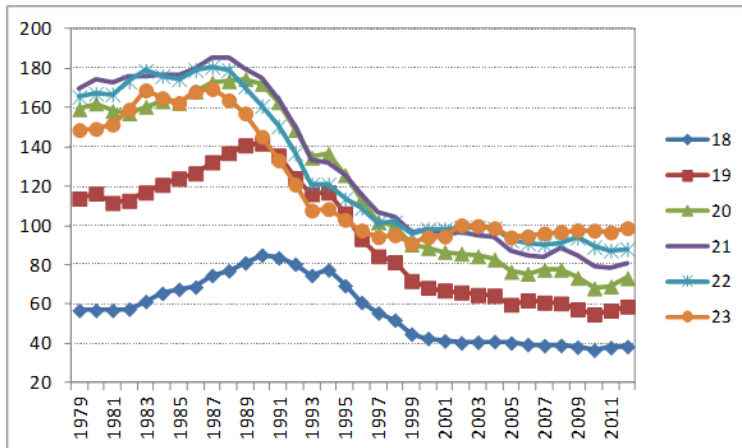
31 October - 1 November, 2013
HSE, Moscow

Completed Cohort and Period Total Fertility in Russia (average number of births to a woman by age 50): birth cohorts 1841-1982 (extrapolation with fixed ASFR as of 2012), period 1897-2012

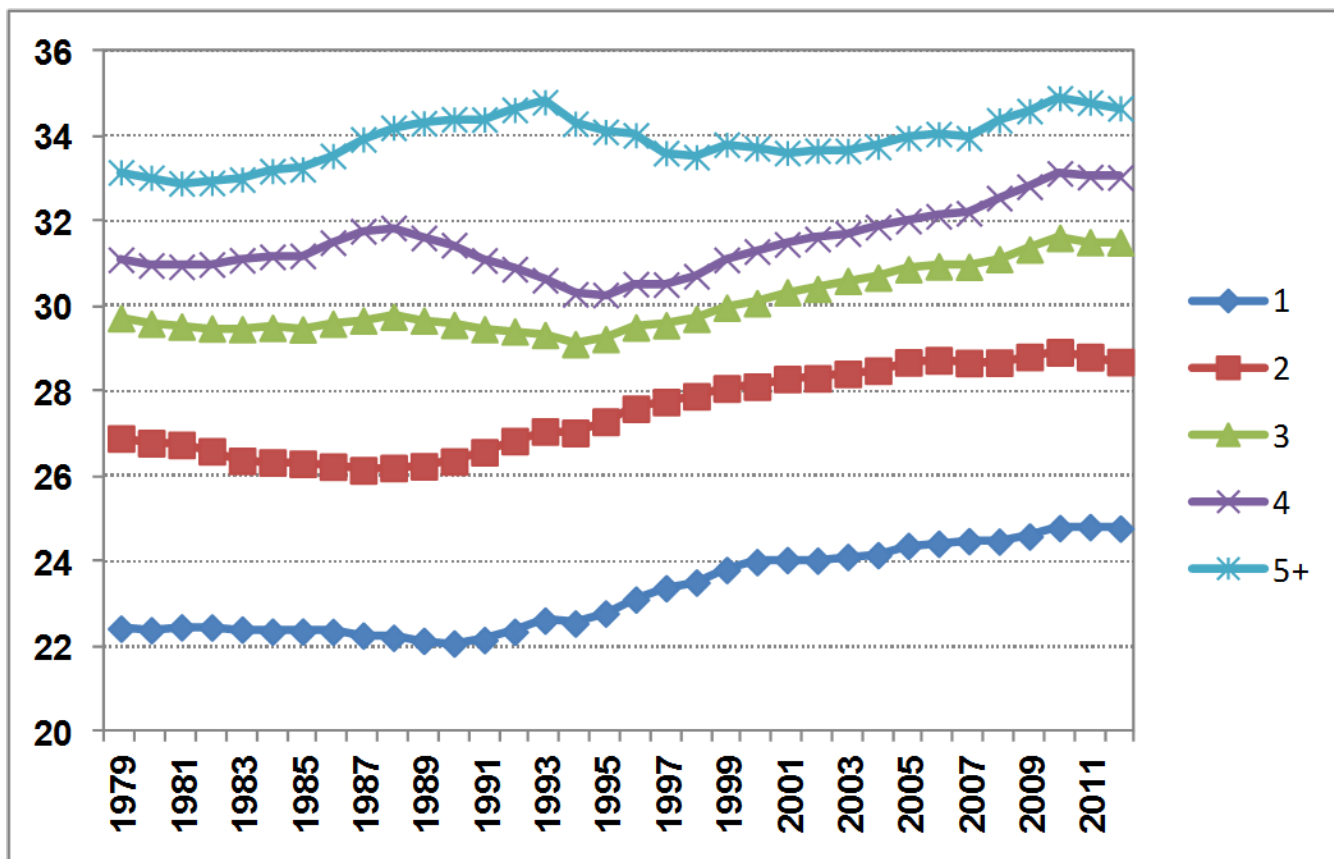


Source: Zakharov S.V. (2008). Russian Federation: From the first to second demographic transition. *Demographic Research*. Vol. 19, p.910 (<http://www.demographic-research.org/Volumes/Vol19/24/>). (Updated for 2012 data)

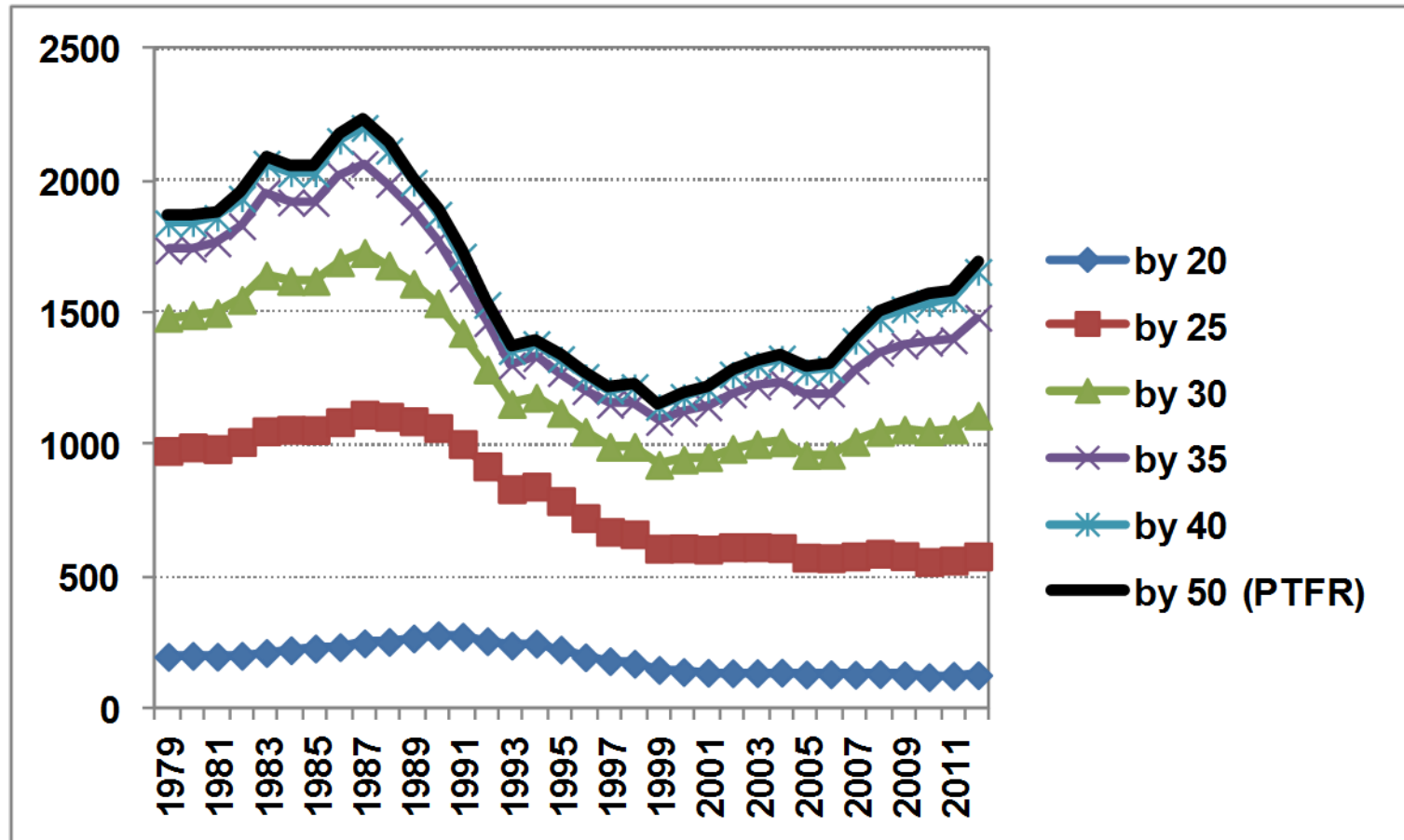
Period ASFR, Russia: 1979-2012, per 1000



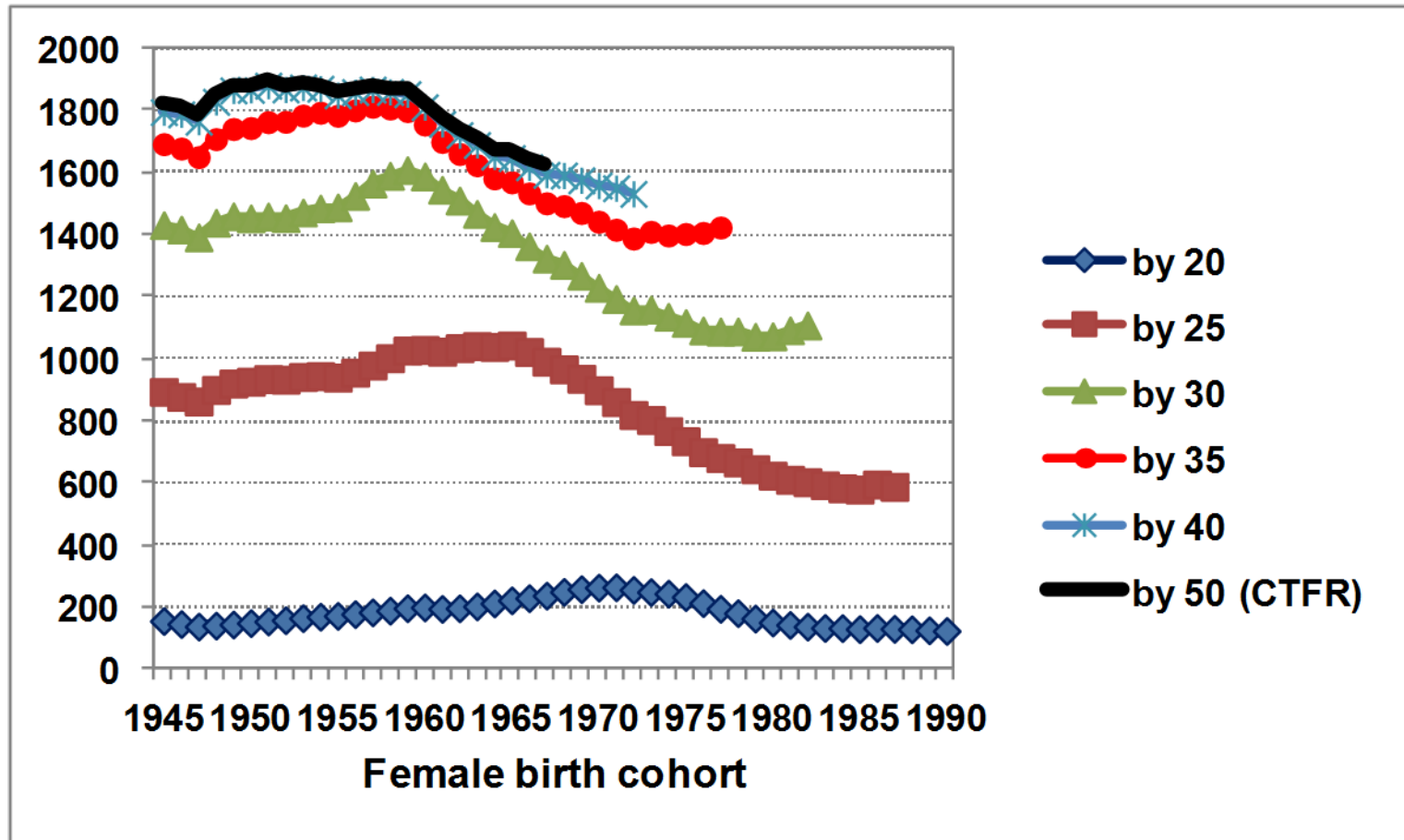
Mean Age of Women at Birth by Birth Order (Period Order-Specific Fertility Tables), 1979-2012



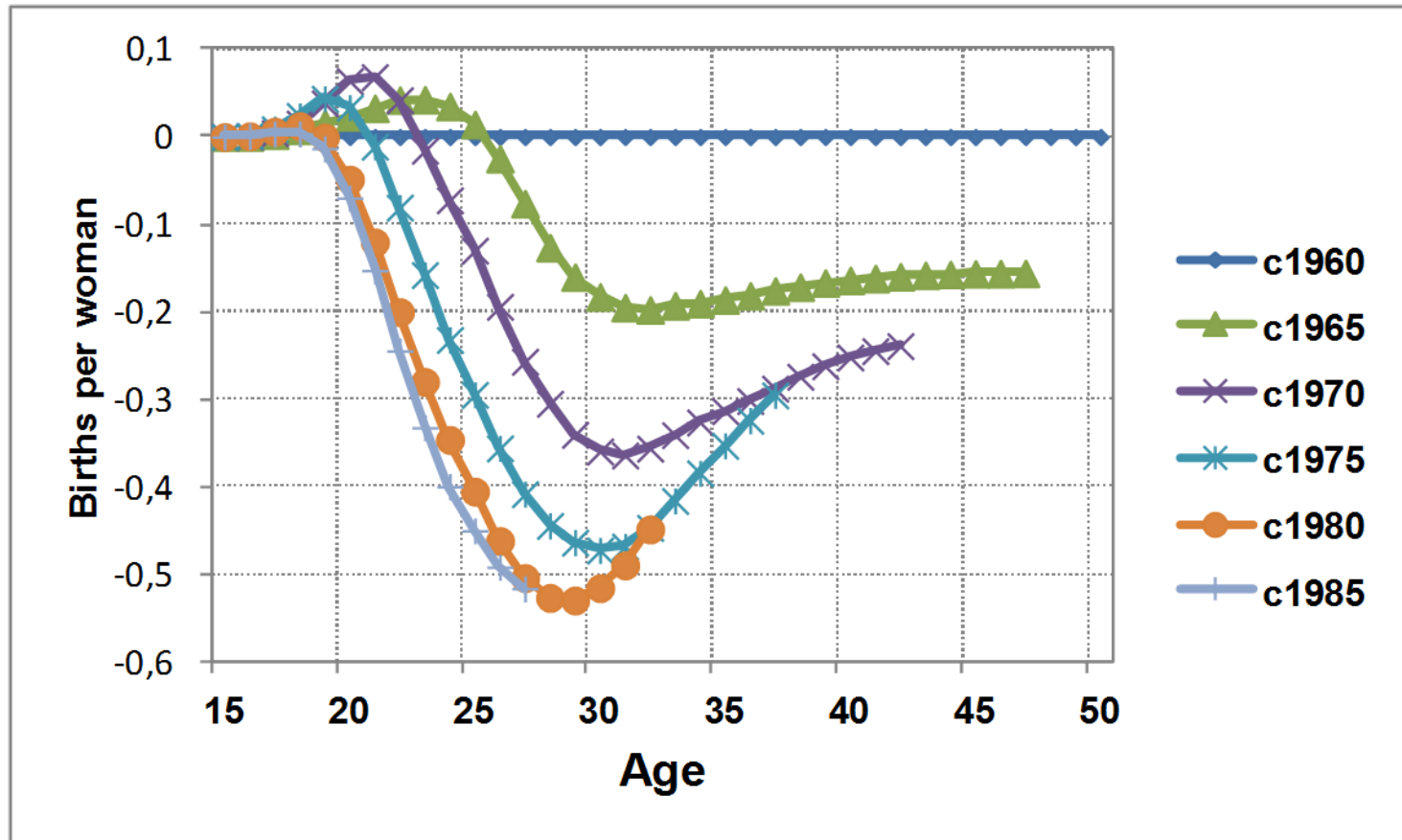
Cumulated Period ASFR, Russia: 1979-2012, per 1000



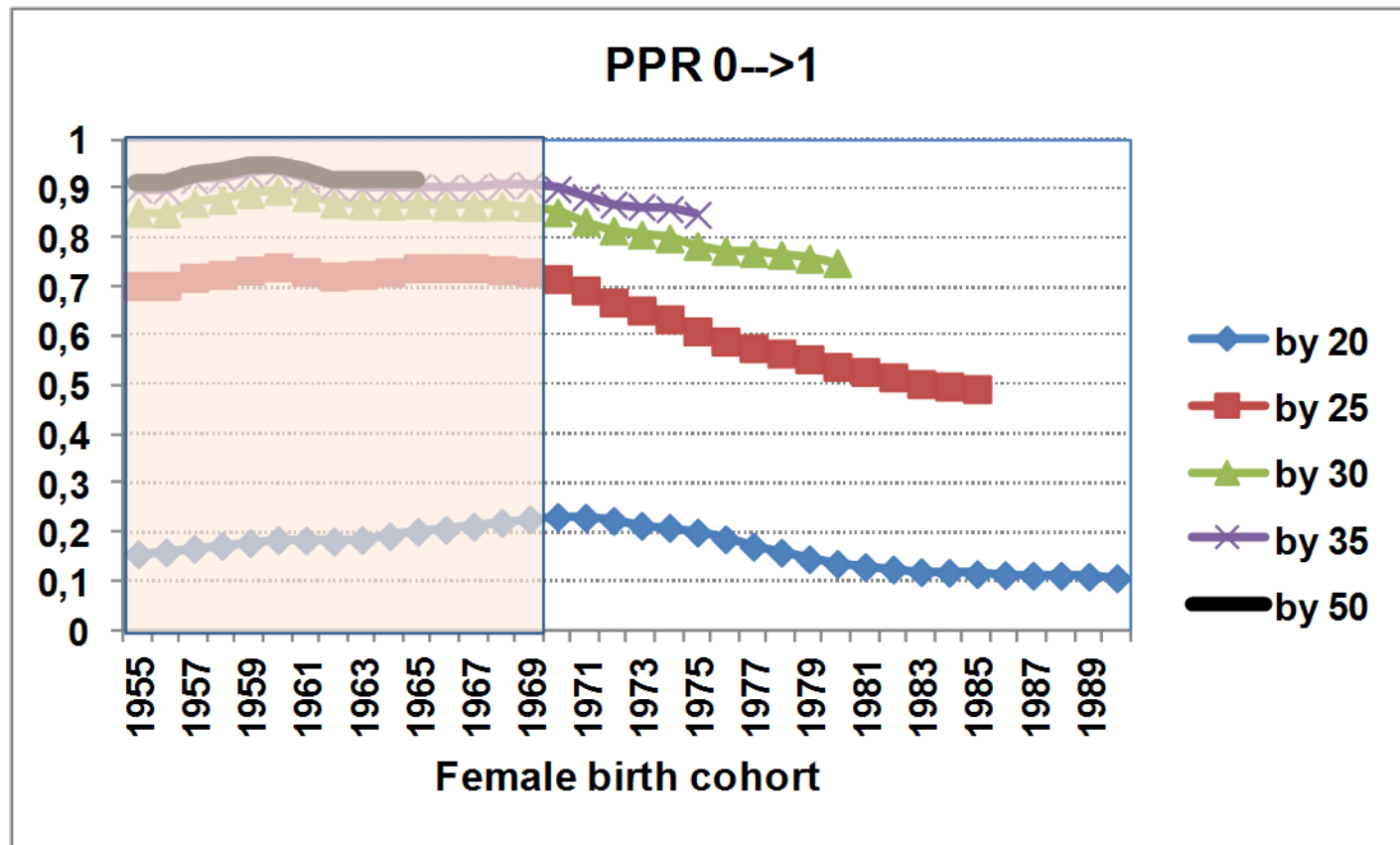
Cumulated Cohort ASFR, Russia: Cohorts 1945-1990, per 1000



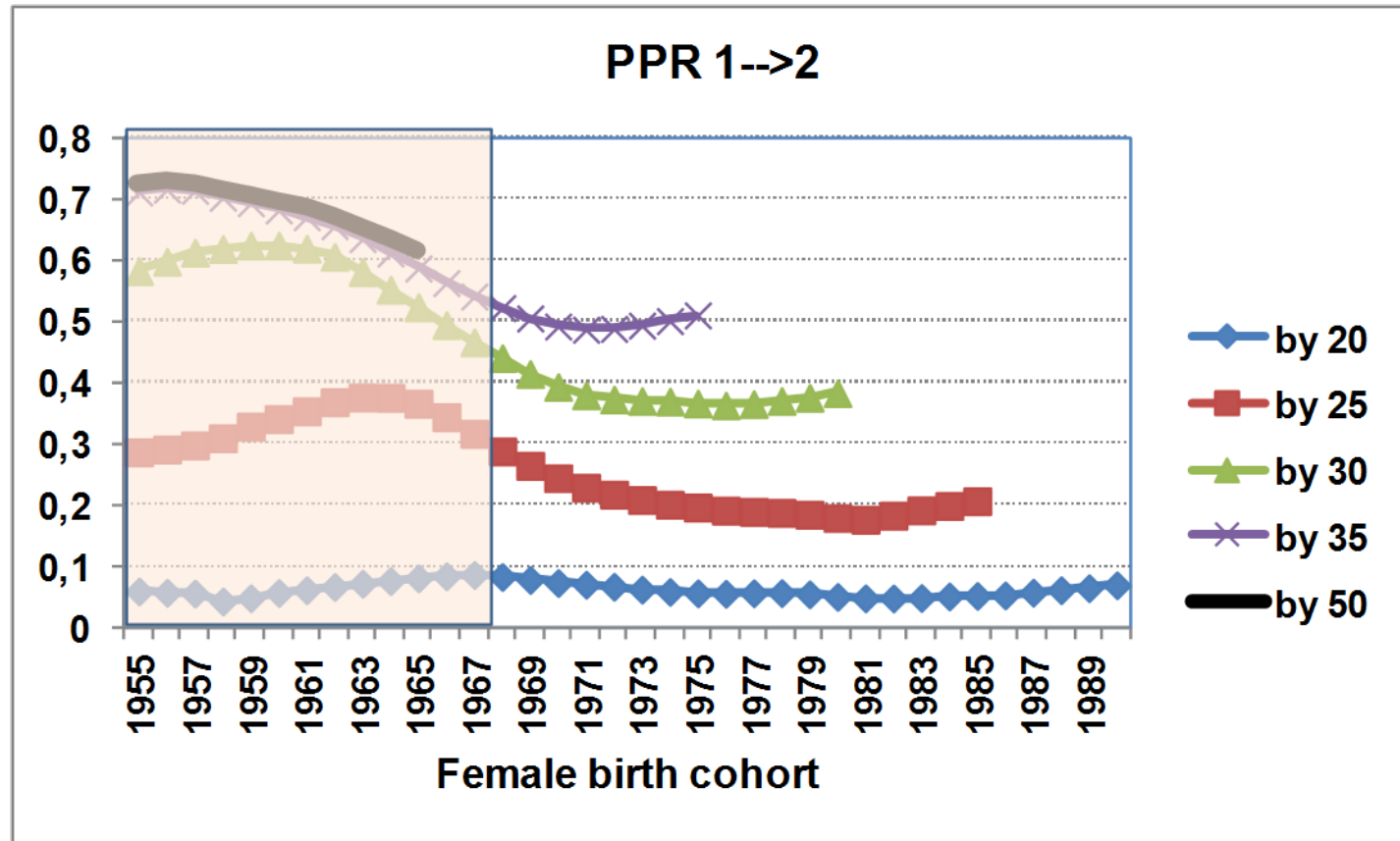
Differences in Cumulated cohort ASFR between base (1960) and subsequent cohorts 1965, 1970, 1975, 1980 and 1985



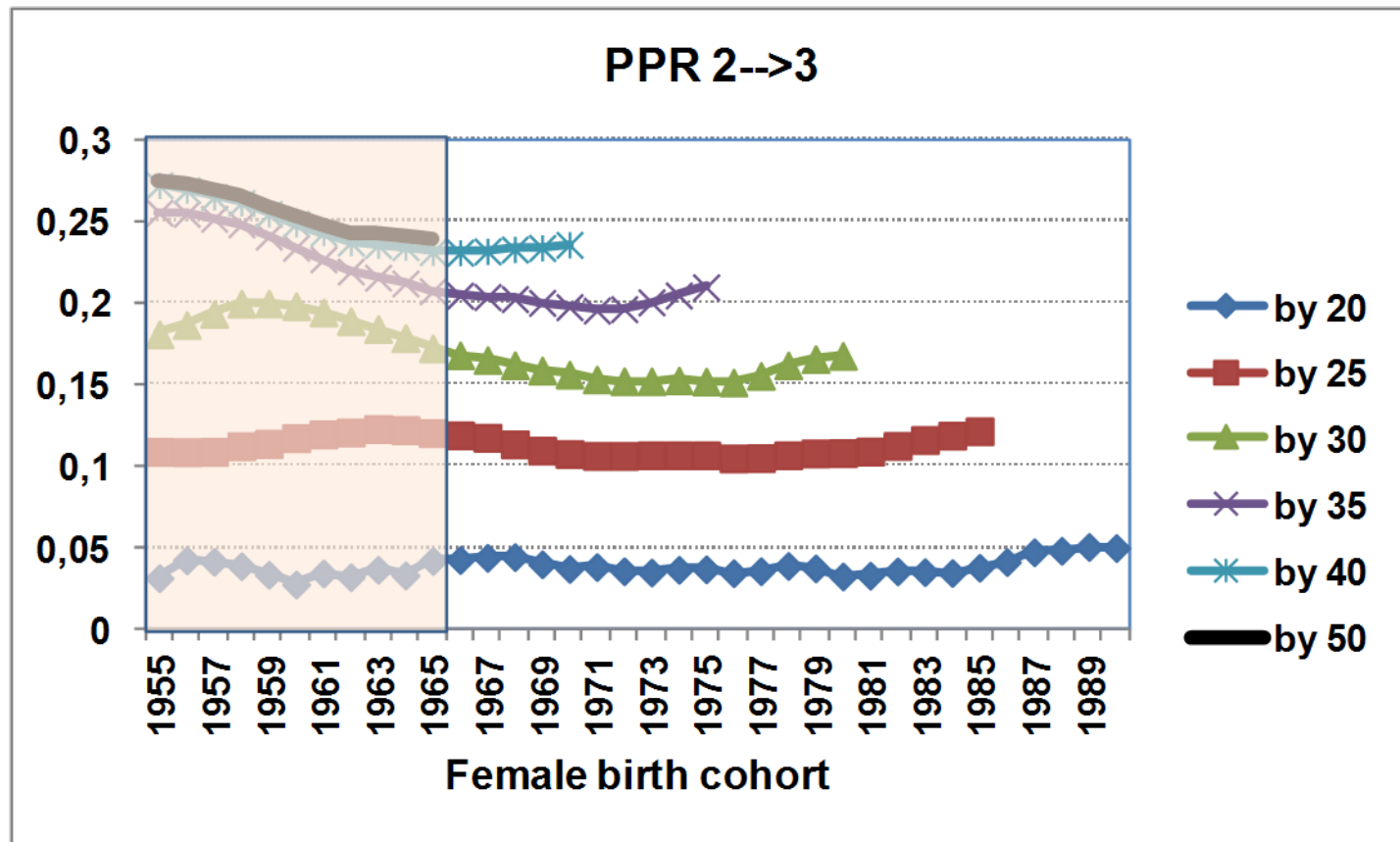
Parity Progression Ratios by Age of 20, 25, 30, 35, 50: Transition 0→1



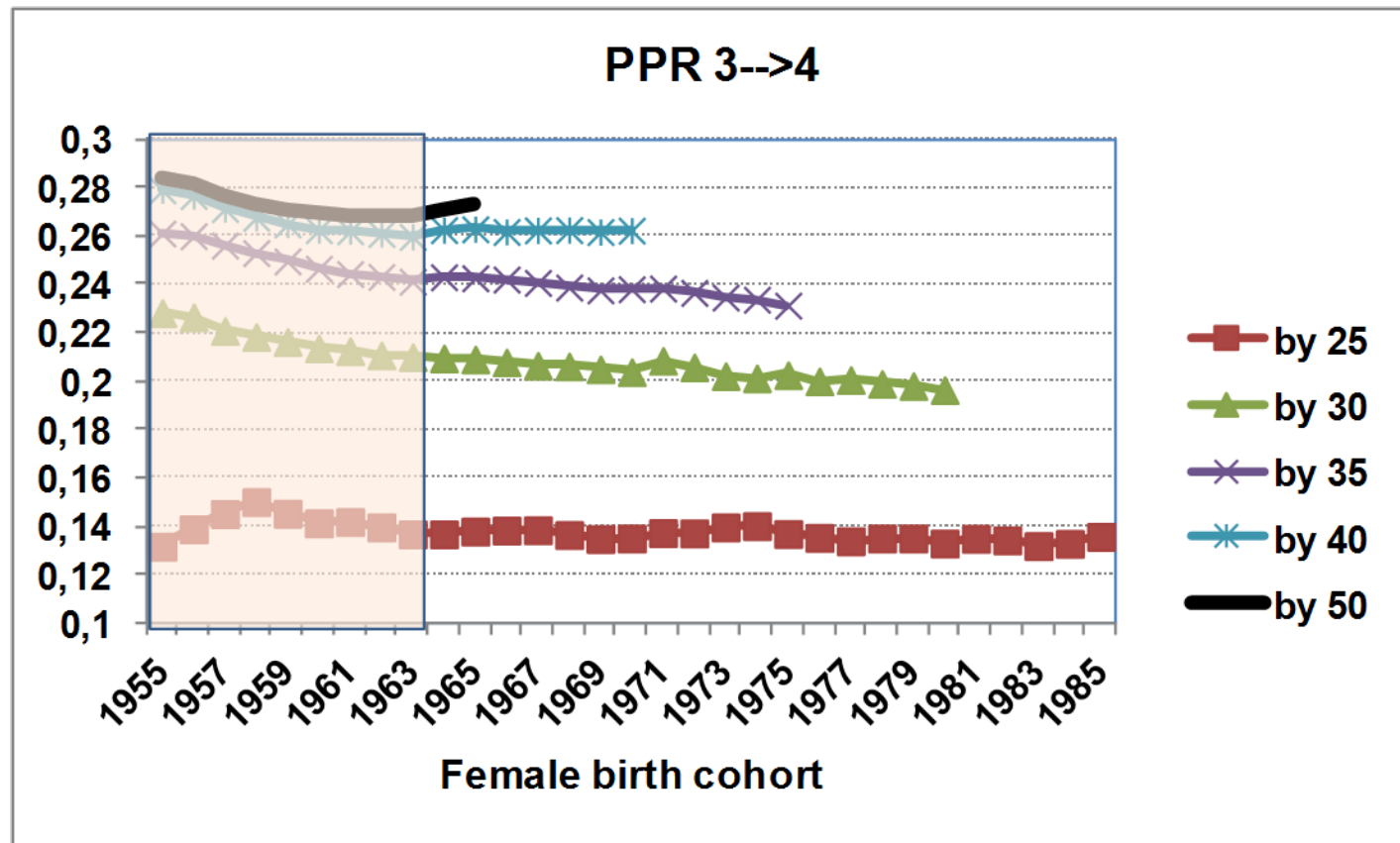
Parity Progression Ratios by Age of 20, 25, 30, 35, 50: Transition 1→2



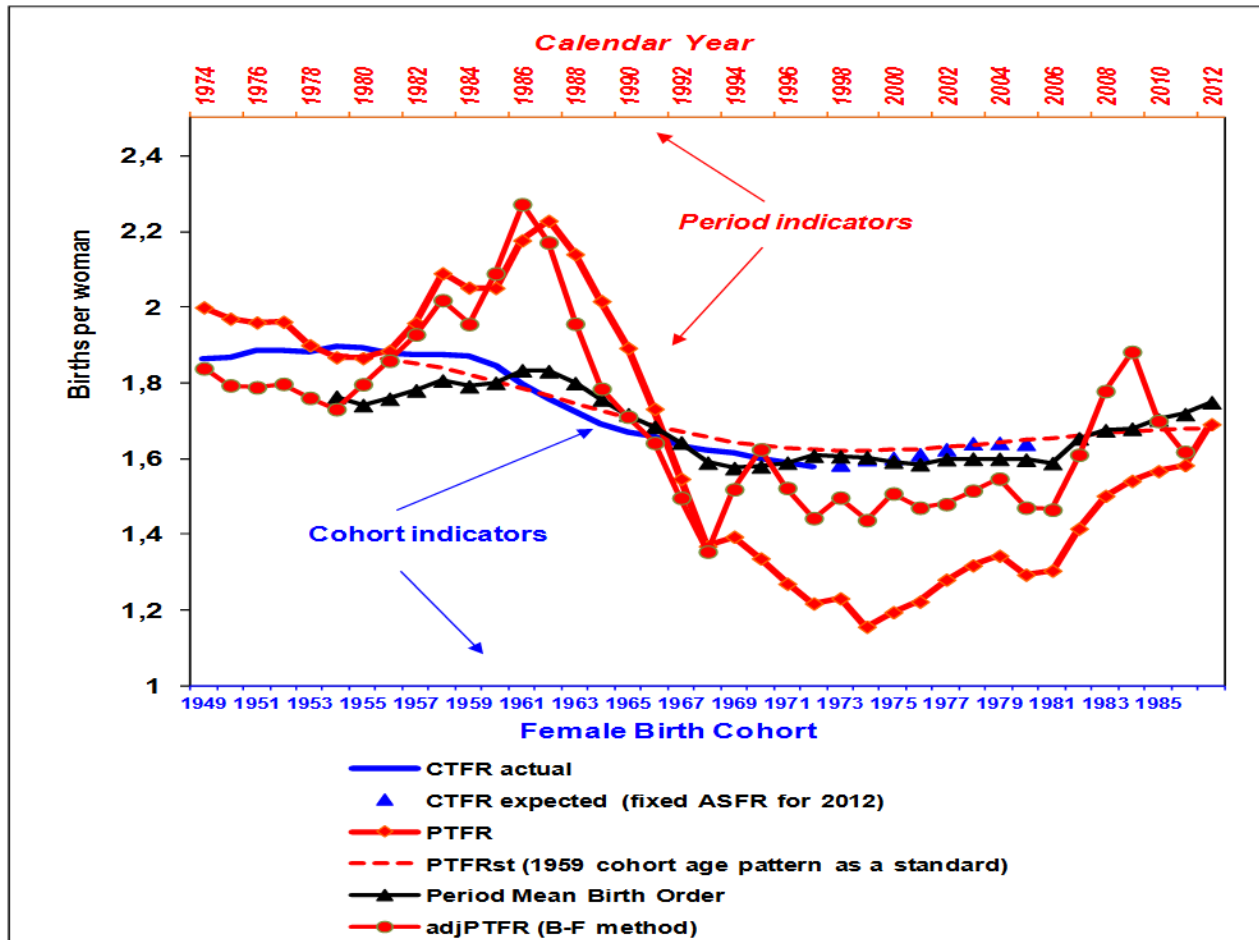
Parity Progression Ratios by Age of 20, 25, 30, 35, 40, 50: Transition 2→3



Parity Progression Ratios by Age of 25, 30, 35, 40, 50: Transition 3→4



Different Indicators of Total Fertility: Cohort versus Synthetic Measures, Russia, 1979-2012



Intentions of Ever Having the Next Child, respondents aged 25-35, RusGGS, %

Parity	2004	2007	2011
0	91	85	88
1	71	74	71
2	29	32	33
3	22	30	20
All	64	66	67

**Answers to question “Do you intend to have a/another child during the next three years” by parity at the moment of the survey
RusGGS, 2004, 2007, 2011, both genders***

Parity	«Definitely Not»	«Probably Not»	«Probably Yes»	«Definitely Yes»	All
2004	60	19	15	6	100
0	33	23	29	14	100
1	52	21	20	7	100
2+	82	14	3	1	100
2007	57	22	15	6	100
0	35	25	26	14	100
1	50	24	20	6	100
2+	77	17	4	1	100
2011	57	22	17	5	100
0	25	28	35	12	100
1	55	23	18	4	100
2+	78	17	5	1	100

Percentage of respondents who gave a birth within three years after the survey by the number of children already born to the date of survey and by their answers to the question on intentions to have a/another child during the next three years, RusGGS, both genders

Parity	Percentage of respondents who gave a birth in 2005-2007 to those who answered in 2004 to the question on intentions as follows:			Percentage of respondents who gave a birth in 2008-2010 to those who answered in 2007 to the question on intentions as follows:		
	All	«NOT»*	«Yes»**	All	«NOT»*	«Yes»**
0	12	6	20	13	7	22
1	7	3	18	10	5	22
2+	1	1	10	3	2	16
All	6	2	18	8	4	21

* Including those who answered «Probably Not»

** Including those who answered «Probably Yes»

The Uncertainty of Forecast Scenarios:

**Optimism of Policy Makers,
Pessimism of Theorists and Analysts
and
Common Sense of People**